

Hinges and Latching systems

Standard **and** custom-made



Hinges and latching systems for industrial applications



PINET[®]

For all your **H**inge and **L**ock needs

PINET has been manufacturing products for various industrial applications for the past six generations and has established itself as a leading European firm, investing in processes and technologies that currently enable it to manufacture over 2,000 standard and custom-made hinge and lock products.

● Valuable expertise in the field

With some 90 years' experience under its belt in the manufacture of hinges, PINET boasts a unique field of expertise that enables it to meet its customers' requirements with regards to quality, lead times and indeed cost. With the emphasis very much on its manufacturing quality, PINET has established a modern production facility that enables it to produce series of all sizes. Its integrated tooling workshop enables it to independently design and create plant equipment whilst safeguarding its expertise.



The PINET offering provides solutions designed to meet the needs of clients in a number of sectors:

- construction plant
- agricultural machinery
- commercial vehicles
- railway equipment
- electrical cabinets, terminals and switch boxes
- aeronautics
- mechanical construction, etc.

● A guarantee of quality

PINET has always been committed to a constant search for quality and excellence, basing its values on its continuous quest for progress.

- When the company began manufacturing musical instrument components in 1840, the need to achieve specific and precise sounds meant that production facilities had to be tightly controlled.
- Over the past 30 years, the company has adopted a pro-active policy that has enabled it to implement a quality management system resulting in our clients obtaining various certifications, as well as ISO 9001 certification.

This commitment to quality is based on continuous investment in modern production facilities, the latest CAD software programmes and the involvement and expertise of our teams



Having obtained ISO 9001 certification, PINET

- is able to guarantee the following:
- consistent manufacturing quality
 - compliance with manufacturing time frames
 - optimised product design

Key milestones that have marked PINET's over 170-year history

1840

Creation of the PINET company in Paris, specialising in the manufacture of musical instrument components.

1921

The company, still in Paris, diversifies its activity and begins manufacturing hinges.

1996

Construction of a production plant in Chaumes, in the Picardy region.

2009

Construction of a logistics platform alongside the production plant.

2012

Creation of an industrial site in Tunisia. Launch of an online e-commerce site selling all of the standard products in the PINET catalogue in France and Europe.



Custom designed

The solution to

Custom designed

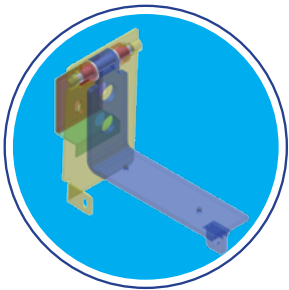
To best serve your projects, the custom-made activity is designed in two ways:

● In accordance with your drawings

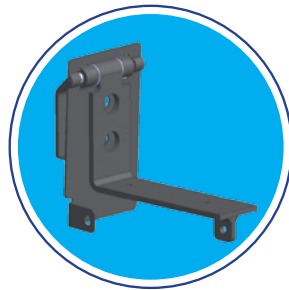
Based on the information you provide, our design office will help make your plans a reality, acting responsively to provide the most cost-effective solution. Based on its unique expertise, in the creation of high-thickness products in particular, the design office will advise you on how to optimise your plans in order to achieve your objectives in terms of both function and budget.

● In accordance with your brief

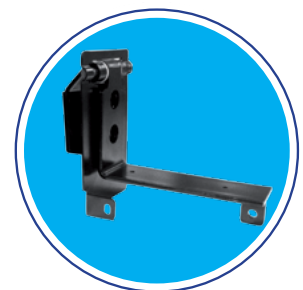
After close consideration of your needs, our design office will offer the best possible solution in accordance with your technical and financial constraints.



1 CAD drawings



2 Prototype



3 Finished product

A collaborative approach



The PINET design office offers a range of competitive and exclusive solutions based on a series of specifications. Our desire to work alongside our clients facilitates the various stages of the design process, guaranteeing a high level of responsiveness and enabling us to provide our clients with innovative products at the best possible cost.

This collaborative approach is based on the following:

- a team of qualified and experienced technicians and engineers to manage your projects
- CAD workstations boasting the latest software packages available (SolidWorks) to facilitate exchange
- the option of communicating by means of a variety of deliverables, including drawings, videos, 3D printed models, etc.

All of these tools enable us to reduce product development cycles and comply with our customers' restraints.



Standard

meet all your needs

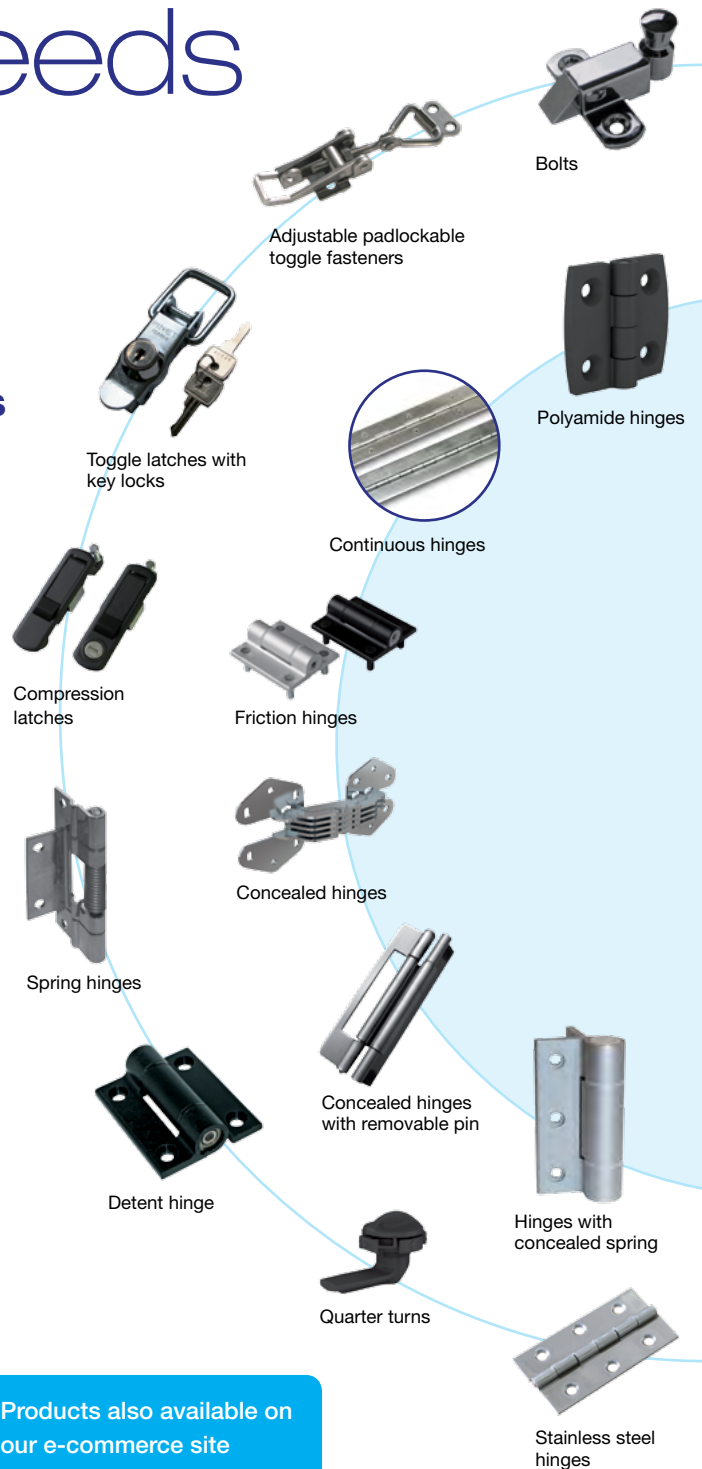
Standard

Over 2,000 catalogue products immediately available

- a wide range of products in a variety of sizes and materials
- a comprehensive range available in stock
- logistics managed by a dedicated team and software package (WMS) for optimal responsiveness

Various tools available to aid your choices:

- a printed catalogue of our 2,000 products
- an electronic catalogue available in PDF format on our website
- 2D/3D CAD drawings and product information sheets that can be downloaded online
- an e-commerce site with a selection guide' to help you select the right products to suit your needs



Products also available on our e-commerce site
www.pinet-webstore.com



An organisation **S**triving for **C**ustomer **S**atisfaction

● 2 design offices:

➤ 1 product design office:

- 3D CAD stations (SolidWorks)
- Product Data Management system
- guarantee of a reliable process for any custom project
- compliance with quality criteria and cost and time restraints
- test laboratories
- creation of models and prototypes

The product design department is equipped with CAD 3D stations and a 3D printer used to create collaborative designs that meet your specific needs.



➤ 1 engineering design office:

- 3D CAD stations
- design of tools manufactured internally
- CNC machine programming



● 2 productions sites

➤ 1 factory in Picardy

➤ 1 workshop in Tunisia

Machinery including the following:

- 33 presses (automatic and manual)
- 2 CNC machining centres
- machines specifically designed for the manufacture of hinges
- 2 CNC laser cutting machines
- welding equipment
- in-house tooling workshop



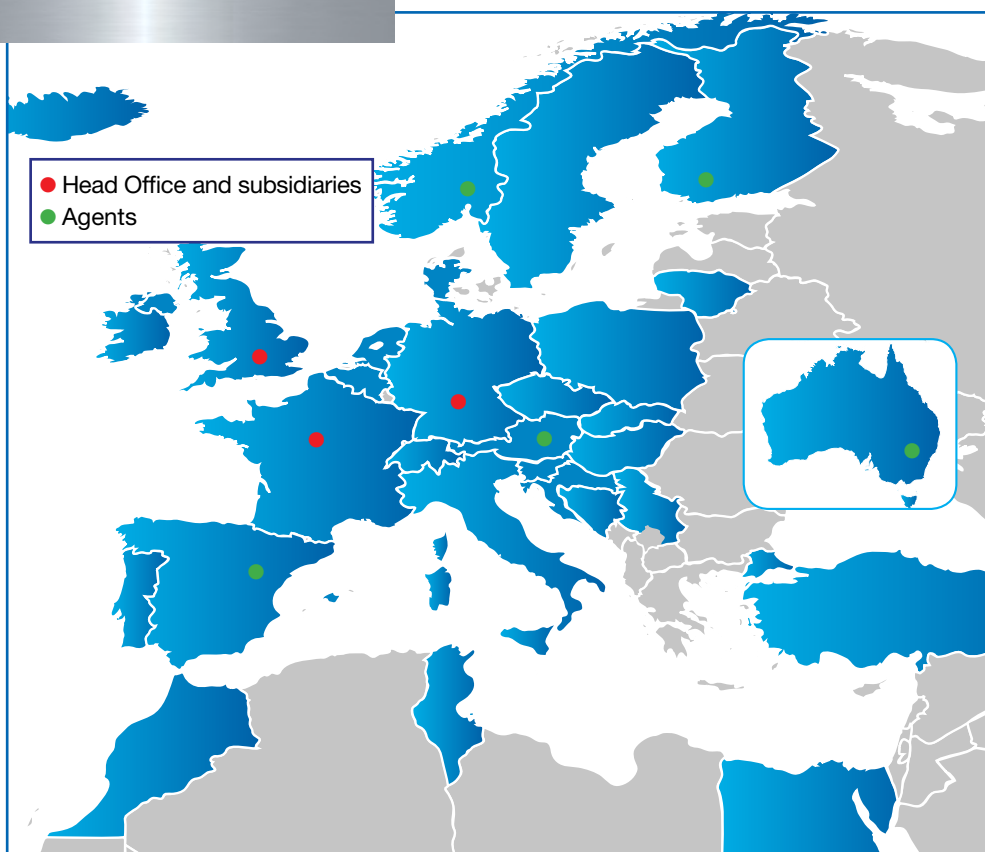
● 1 logistics platform

Built alongside the factory in 2009, the site spans some 4 500 m². This platform uses the latest inventory management technologies for increased customer satisfaction by means of greater service quality.

Supply chain optimisation with the following built-in functionalities:

- ERP integration (Sage Adonix)
- WMS (Warehouse Management System) installation
- validation of inventory movements by means of a Wi-Fi system
- use of vertical storage systems
- warehouse flow optimisation





In a context of a fast changing economy, PINET works as part of a network with a global outlook.

In addition to the products it has historically manufactured at its Picardy plant, PINET is now able to produce goods at its new factory in Tunisia, with an industrial setup in China that it can call upon if need be, enabling it to offer high-quality products at the best prices.

A large inventory combined with a high-performance logistics service means that we are able to deliver all customer orders within the specified time frames, regardless of geographical location.

With over **30% of its turnover generated outside of France**, PINET has established itself as one of Europe's key players when it comes to hinges and locks.

Its products are available internationally:

- either directly through its subsidiaries in the United Kingdom and Germany or through its export sales representatives
- or indirectly through agents and distributors

● Sales department structure

The PINET technical sales team comprises the following:

- customer managers in France and Europe in direct contact with the customer
- a team of sales assistants who are also at the customer's disposal for the purposes of handling requests for quotations and processing orders
- office-based salespeople providing technical and sales support by phone



PINET[®]

● Pinet Industrie

9 rue de l'étang
PIA Paris Nord 2
BP 62036
95971 Roissy Charles de Gaulle CEDEX
Tel.: +33 (0)1 49 38 27 00
Fax: +33 (0)1 48 63 77 70
E-mail: marketing@pinet.tm.fr
Website: www.pinet.tm.fr
E-commerce site: www.pinet-webstore.fr

● Pinet LTD

British subsidiary
E-mail: marketing@pinetuk.com
Website: www.pinet.com
E-commerce site: www.pinet-webstore.com

● Pinet GmbH

German subsidiary
E-mail: marketing@pinetgmbh.de
Website: www.pinetgmbh.de
E-commerce site: www.pinet-webstore.de

